





01



ZZWŞ` Y Sa` YkgS` Agfa_agf g ga f g





12.5 2030

12.6



0

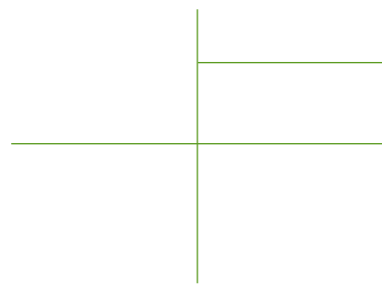
7

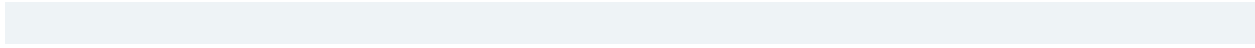
3

1

22

2







_____ 10

I





0



I

/

ISO 14001





2023

2023

23

23

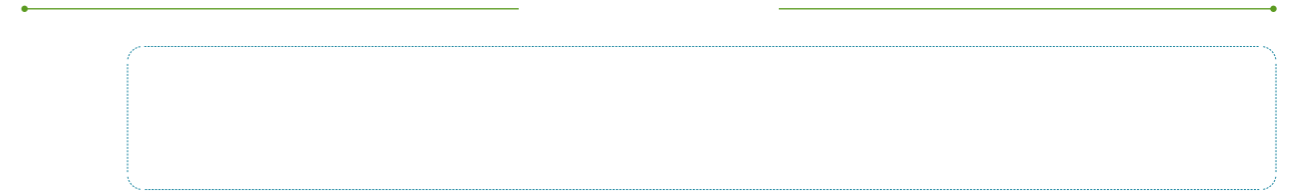
184 MWZ

2023





	• 100		20% -25%	
	•			
	• 65		320	
	• 33			300
	•			18,000
	• 1.8MW		218	
	• 185	160		
	• 35	8		90



0.636535 MWb

0.639915 MWb

3380 MWZ

0.636535MWb

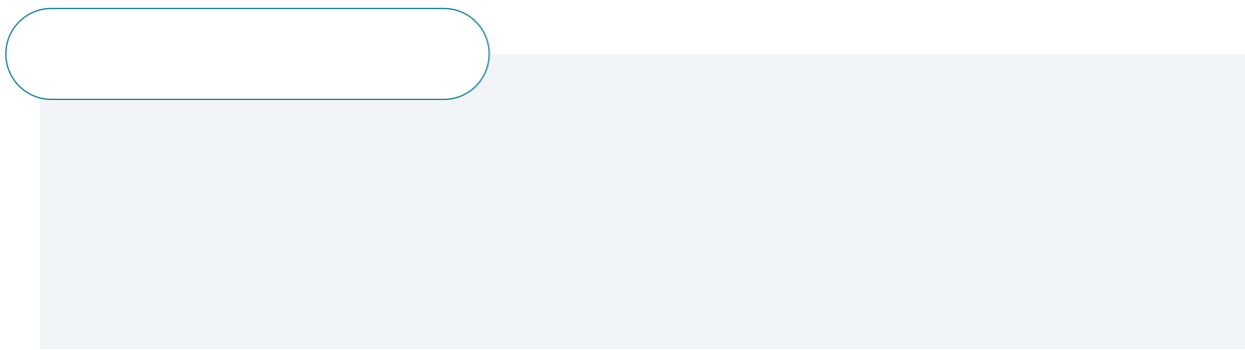
3.659915MWb

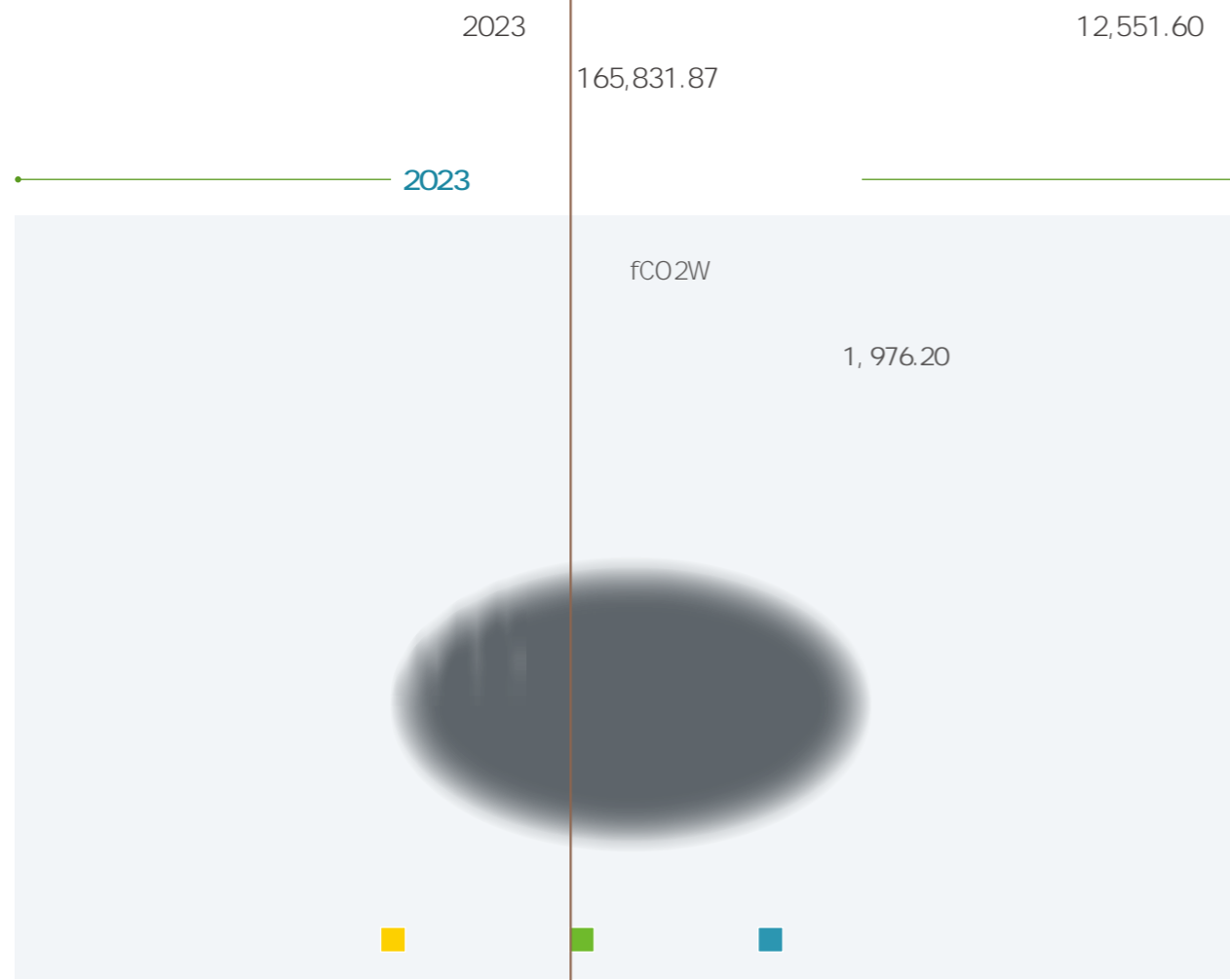


10

24

3,232

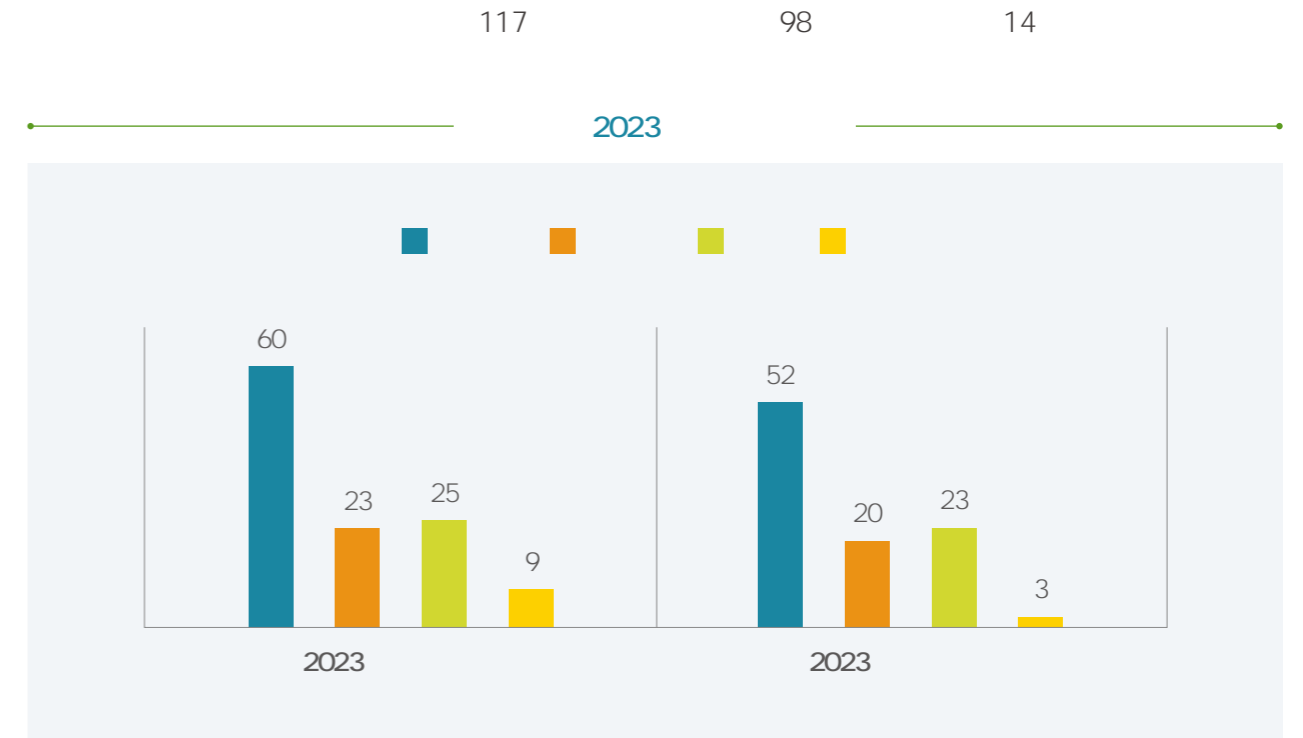
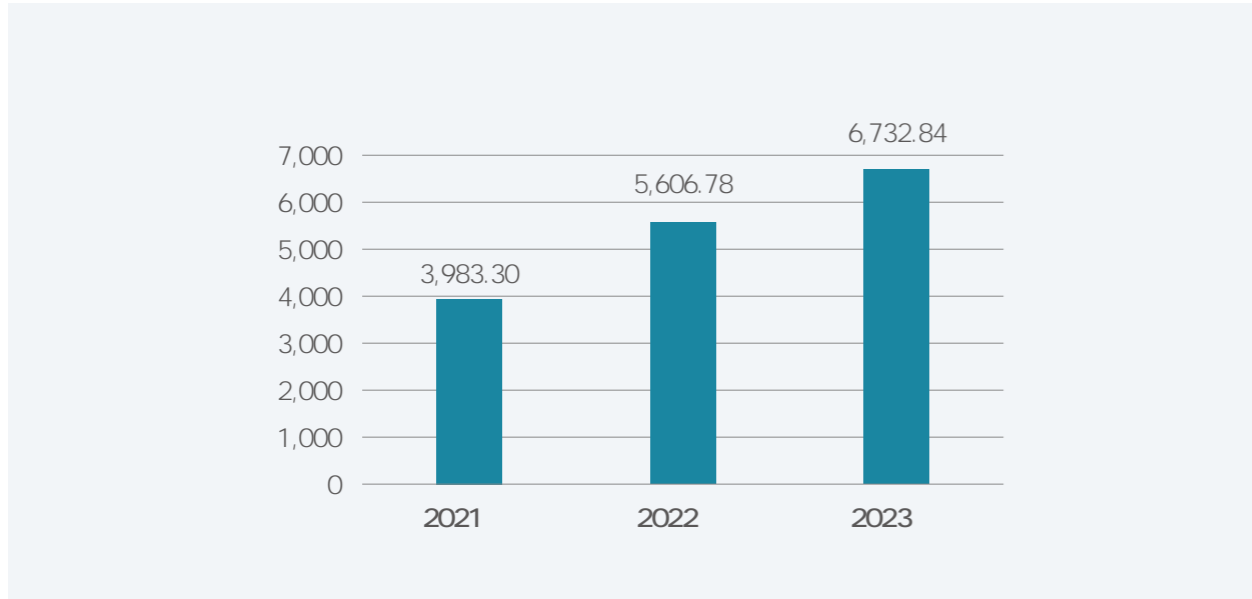




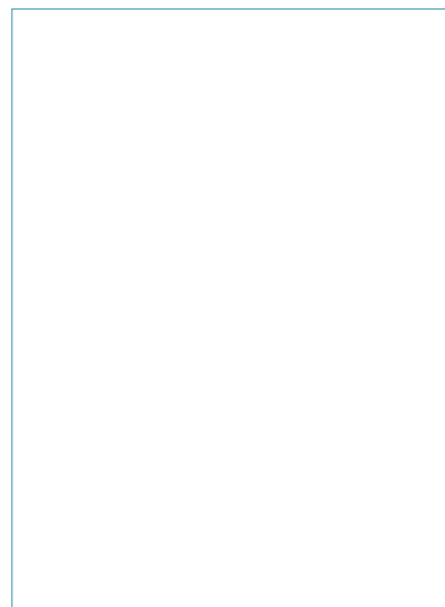


2023

20% 196 19.8% 6,732.84
CNAS



C@AE



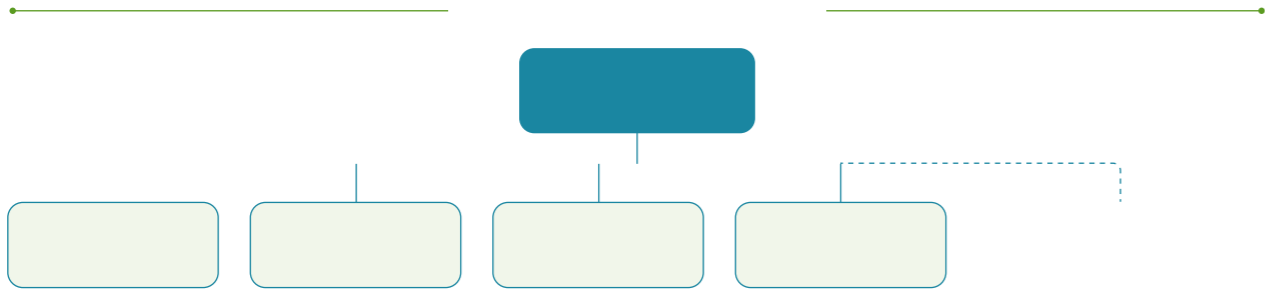
GB14166 ECER16



IATF16949 2016

PCDA

- - - -









3%

70

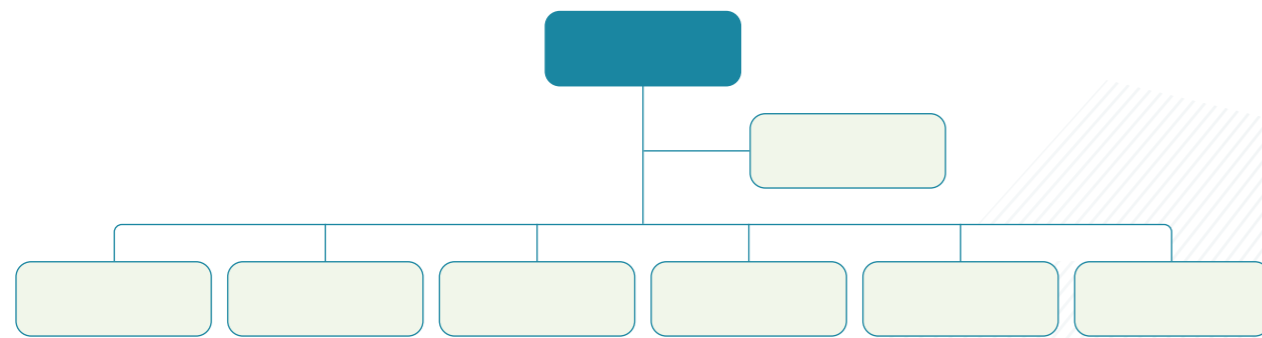
5%

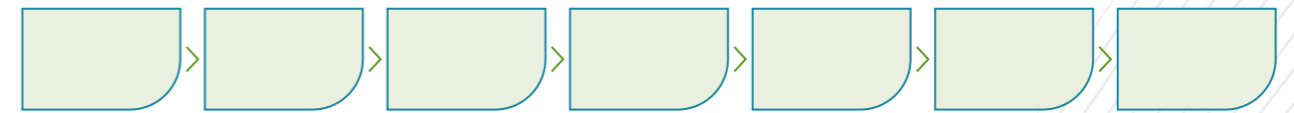
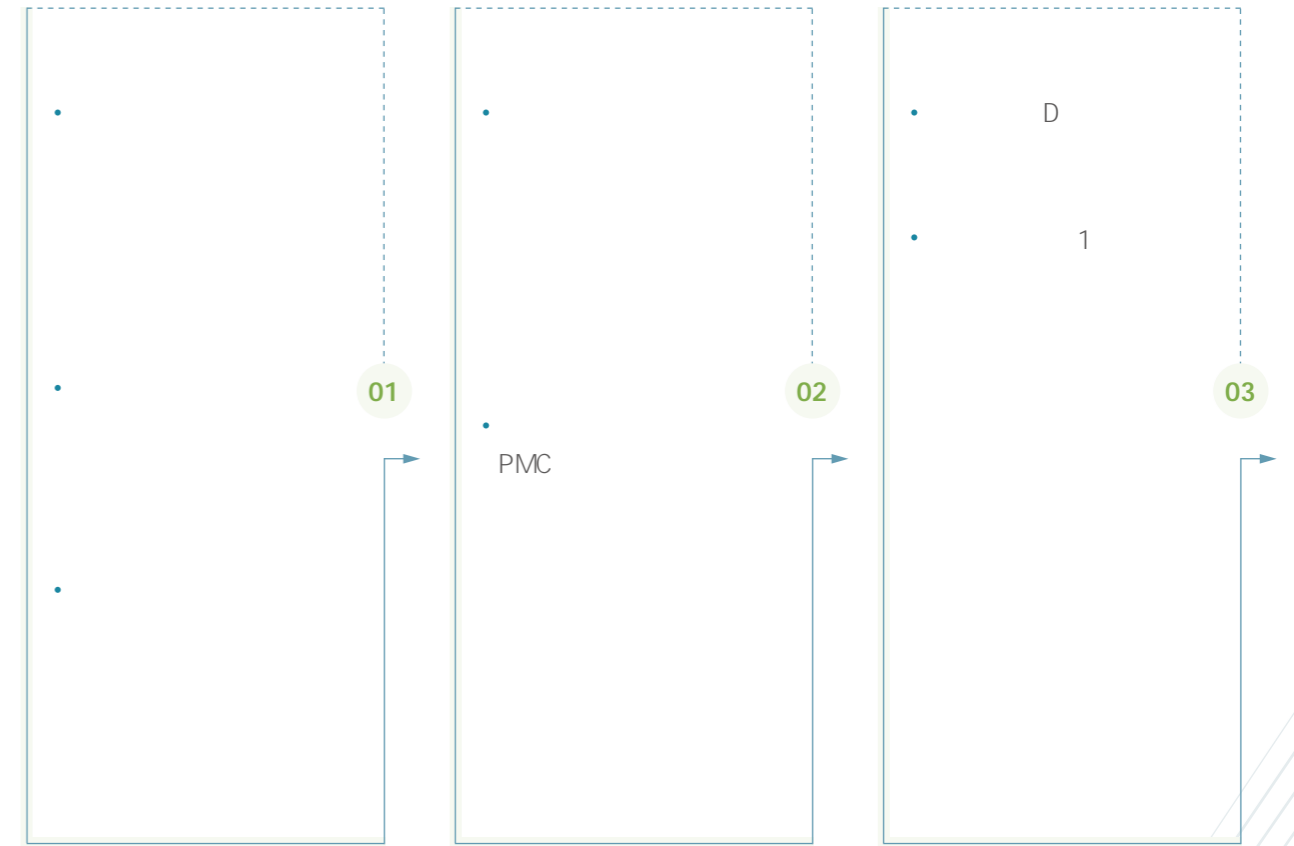
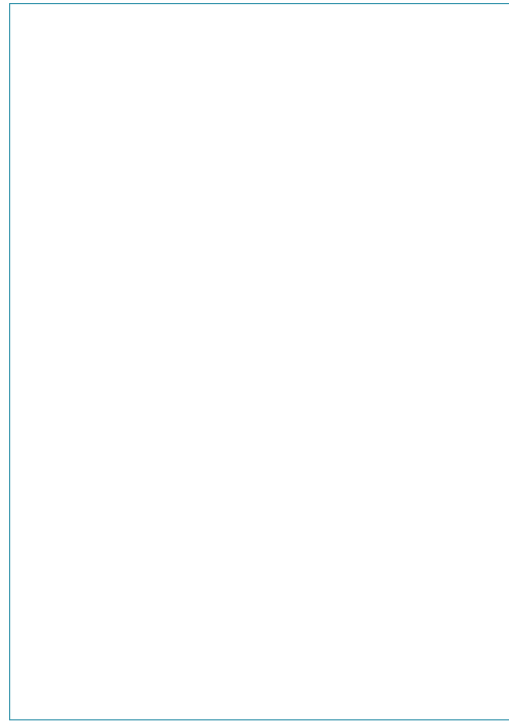


-
-
-
-



-
-
-
-





ESG

ESG

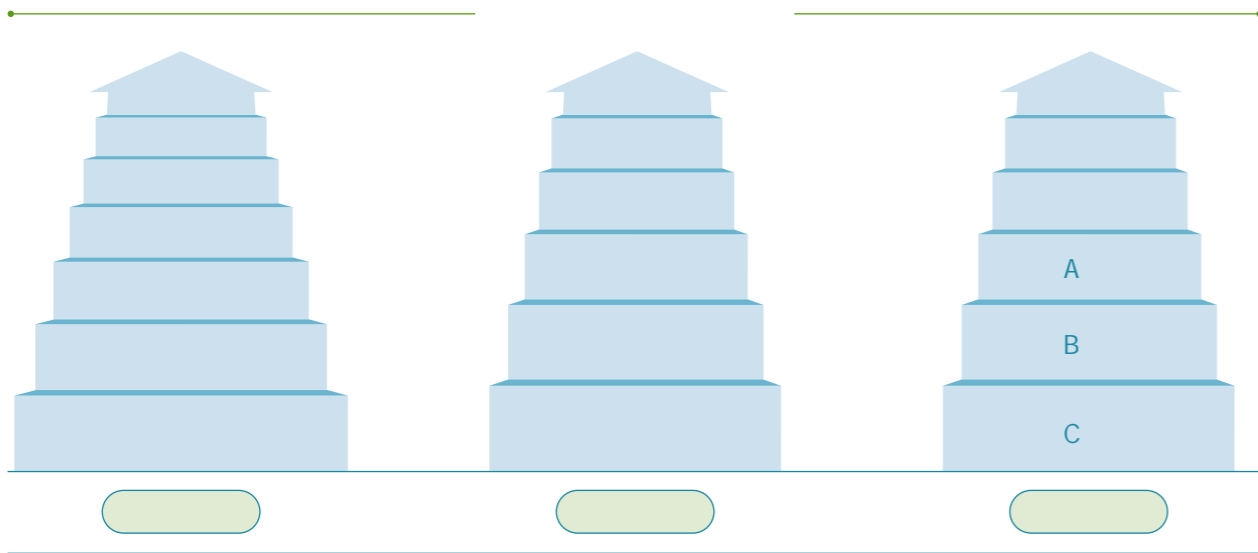
TS16949(IATF16949)













2023

51

2023

2023

" "



	/	0.08	0.08	0.10
4		—		
/				



		2021	2022	2023
	%	100.00	100.00	100.00

		2021	2022	2023
		112	185	196
		3,983.30	5,606.78	6,732.84
		—	—	28

		2021	2022	2023
		0	0	0
		0	0	0
		0	0	0

		2021	2022	2023
		69.5	76.4	51.0



GD;					
GRI 2 2021	2-10	Zffb://i i i . U` [`Xa.Ua_ .U` / W / S` `ag` UW_ W f/Vai ` `aSV?Tg^Wf[IV=122 0675711&S` `ag` UW[_ W#2024-07-19			
	2-11	2023 Zffb://i i i . U` [`Xa.Ua_ .U` / W / S` `ag` UW_ W f/Vai ` `aSV?Tg^Wf[IV=121 9622004&S` `ag` UW[_ W#2024-04-16			
	2-12	ESG -			
	2-13	ESG - ESG			
	2-14	ESG - ESG -			
	2-15	- -			
	2-16	ESG -			
	2-17	ESG -			
	2-18		2-18-S 2-18-T 2-18-U	/	
	2-19		2-19-S 2-19-T		

GD;					
GRI 2 2021	2-20		2-20-S 2-20-T		
	2-21		2-21-S 2-21-T 2-21-U		
	2-22	ESG -			
	2-23	- -			
	2-24	- -			
	2-25	- -			
	2-26	- -			
	2-27	-			
	2-28				
	2-29	ESG -			



GD;					
GRI 2 2021	2-30	-			
GRI 3 2021	3-1	ESG -			
	3-2	ESG -			
GRI 3 2021	3-3	ESG - - ESG 2023 Zffb://i i i . U` [`Xa.Ua_ .U` / W / S` `ag` UW_ W f/Vai ` `aSV?Tg^W[IV=121 9622004&S` `ag` UW[_ W=2024			
GRI 201 2016	201-1	2023 Zffb://i i i . U` [`Xa.Ua_ .U` / W / S` `ag` UW_ W f/Vai ` `aSV?Tg^W[IV=121 9622004&S` `ag` UW[

201_201_ 201_ 201_ 201_ 201_ g



GD;					
GRI3 2021	3-3	ESG	-		
GRI 206 2016	206-1			206-1-S 206-1-T	/
GRI3 2021	3-3	ESG	-		
GRI 302 2016	302-1		-		
		- ESG			
	302-2			302-2-S 302-2-T 302-2-U	/
	302-3		-		
		- ESG			
	302-4		-		
	302-5			302-5-S 302-5-T 302-5-U	/
GRI3 2021	3-3	ESG	-		
			-		
			-		
GRI 303 2018	303-1		-		
	303-2		-		

--	--	--



GD;					
GRI 306 2020	306-1	-			
	306-2	-			
	306-3	- ESG			
	306-4	- ESG			
	306-5	- ESG			
GRI3 2021	3-3	ESG -			
GRI 308 2016	308-1		308-1-S	/	
	308-2		308-2-S 308-2-T 308-2-U 308-2-V 308-2-W	/	
GRI3 2021	3-3	ESG -			
GRI 401 2016	401-1	- ESG			
	401-2	-			



GD;					
GRI 403 2018	403-8	-			
		- ESG			
	403-9	- ESG			
	403-10	- ESG			
GRI3 2021	3-3	ESG -			
		-			
GRI 404 2016	404-1				
-					
1					
3	3				

ESG
2

3



GD;					
GRI 413 2016	413-2		413-2-S	/	
GRI3 2021	3-3	ESG -			
GRI 414 2016	414-1		414-1-S	/	

413€ 1-S / ESG -
4C 4-1
2016



ESG

ESG

300893

2023 1 1 2023 12 31

GRI

2

2021

2023 12

ESG

ESG

2023 1 1 2023 12 31

H[ESG

1

ESG

0574-62499207

